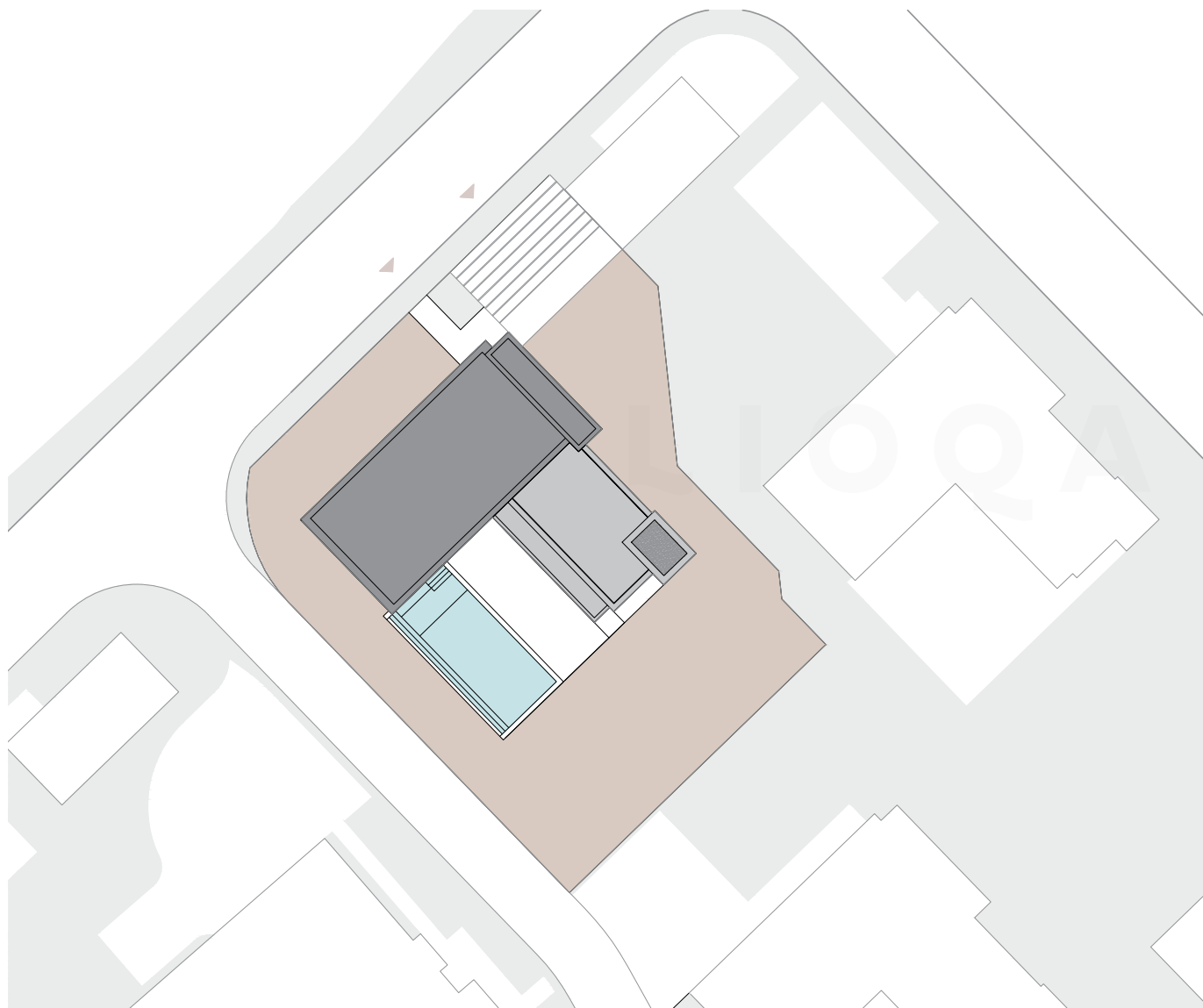


## Villa A5+



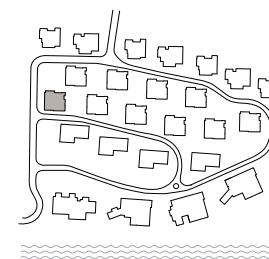
### SUMMARY

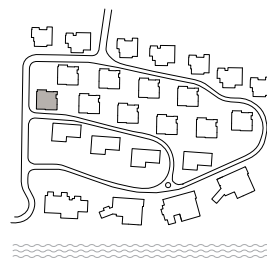
Bedrooms	4
Covered parking	2
Garage	2

**TOTAL INDOOR:** 278,8 m<sup>2</sup>

**TOTAL OUTDOOR:** 236,8 m<sup>2</sup>

**PLOT SIZE:** 785,9 m<sup>2</sup>





## Villa A5+

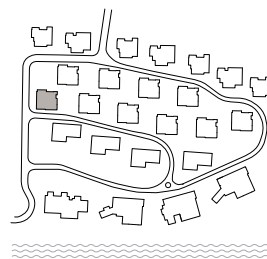
### Underground floor



#### INDOOR AREA

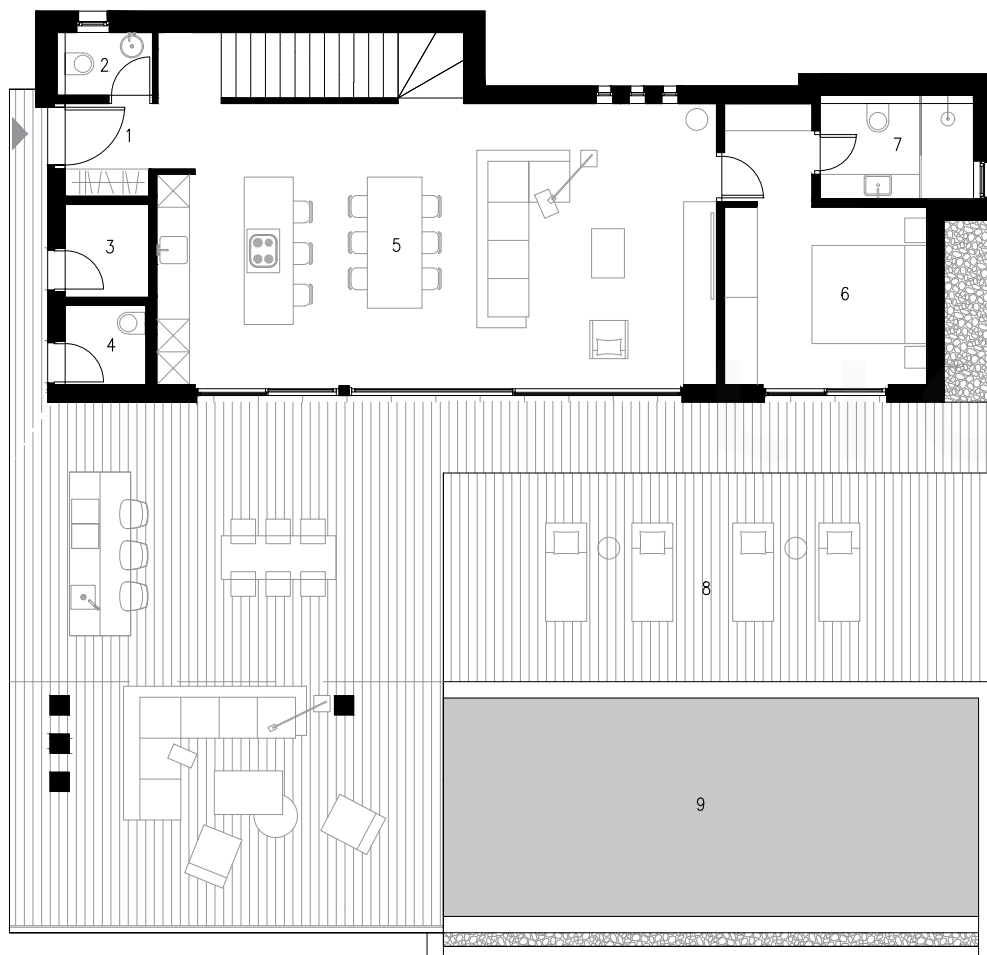
1. Staircase	5,8 m <sup>2</sup>
2. Corridor	6,0 m <sup>2</sup>
3. Playroom/Fitness	35,8 m <sup>2</sup>
4. Anteroom	2,8 m <sup>2</sup>
5. WC	2,3 m <sup>2</sup>
6. Laundry	2,0 m <sup>2</sup>
7. Storage	2,2 m <sup>2</sup>
8. Garage	51,0 m <sup>2</sup>
9. Pool technical room	4,1 m <sup>2</sup>
<b>TOTAL INDOOR:</b>	<b>112,0 m<sup>2</sup></b>





## Villa A5+

### Ground floor



#### INDOOR AREA

1. Entrance hall	3,6 m <sup>2</sup>
2. WC 1	2,0 m <sup>2</sup>
3. Technical room	2,6 m <sup>2</sup>
4. WC 2	2,2 m <sup>2</sup>
5. Kitchen + living room	54,0 m <sup>2</sup>
6. Bedroom 1	15,0 m <sup>2</sup>
7. Bathroom 1	5,5 m <sup>2</sup>

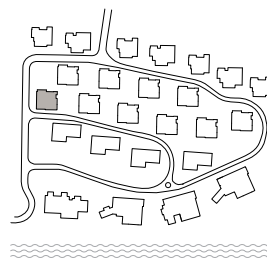
**TOTAL INDOOR: 84,9 m<sup>2</sup>**

#### OUTDOOR AREA

8. Terrace	137,6 m <sup>2</sup>
9. Pool	39,2 m <sup>2</sup>

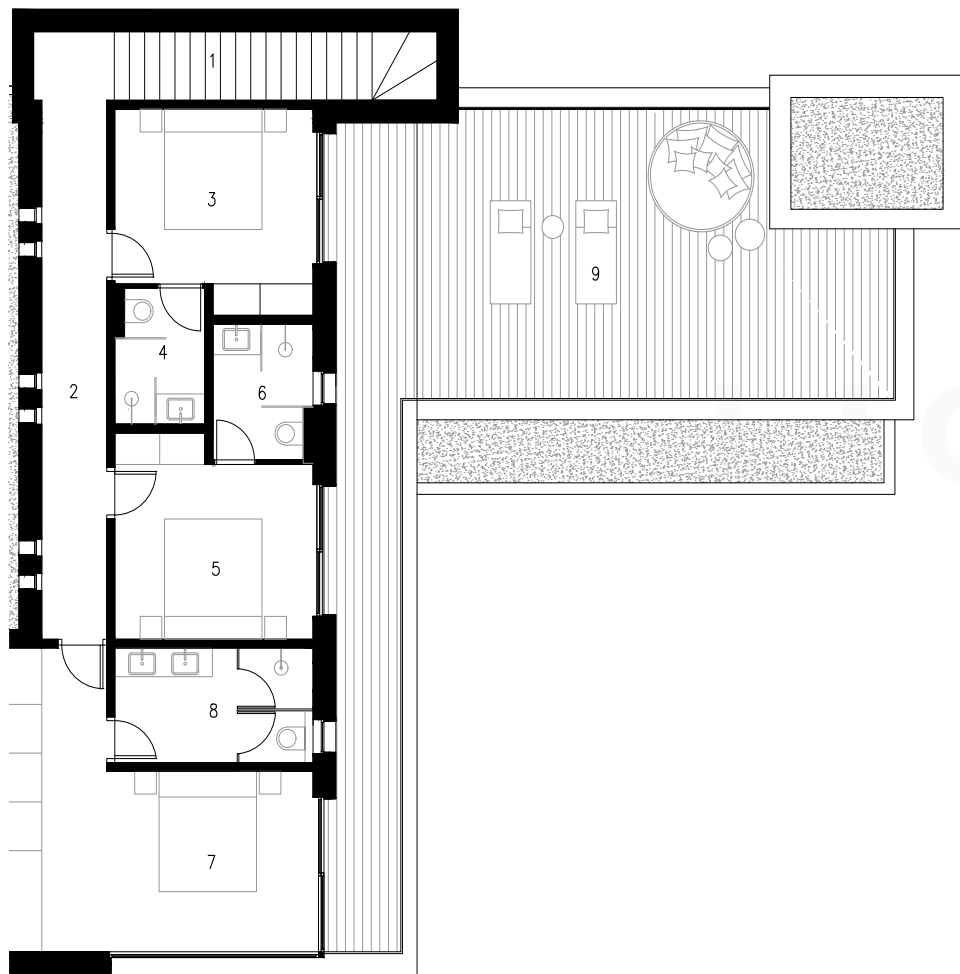
**TOTAL OUTDOOR: 176,8 m<sup>2</sup>**





## Villa A5+

### First floor



#### INDOOR AREA

1. Stairs	7,3 m <sup>2</sup>
2. Corridor	13,1 m <sup>2</sup>
3. Bedroom 2	12,7 m <sup>2</sup>
4. Bathroom 2	4,0 m <sup>2</sup>
5. Bedroom 3	12,7 m <sup>2</sup>
6. Bathroom 3	4,1 m <sup>2</sup>
7. Bedroom 4	21,7 m <sup>2</sup>
8. Bathroom 4	6,6 m <sup>2</sup>

**TOTAL INDOOR: 82,2 m<sup>2</sup>**

#### OUTDOOR AREA

9. Terrace	60,0 m <sup>2</sup>
------------	---------------------

**TOTAL OUTDOOR: 60,0 m<sup>2</sup>**

